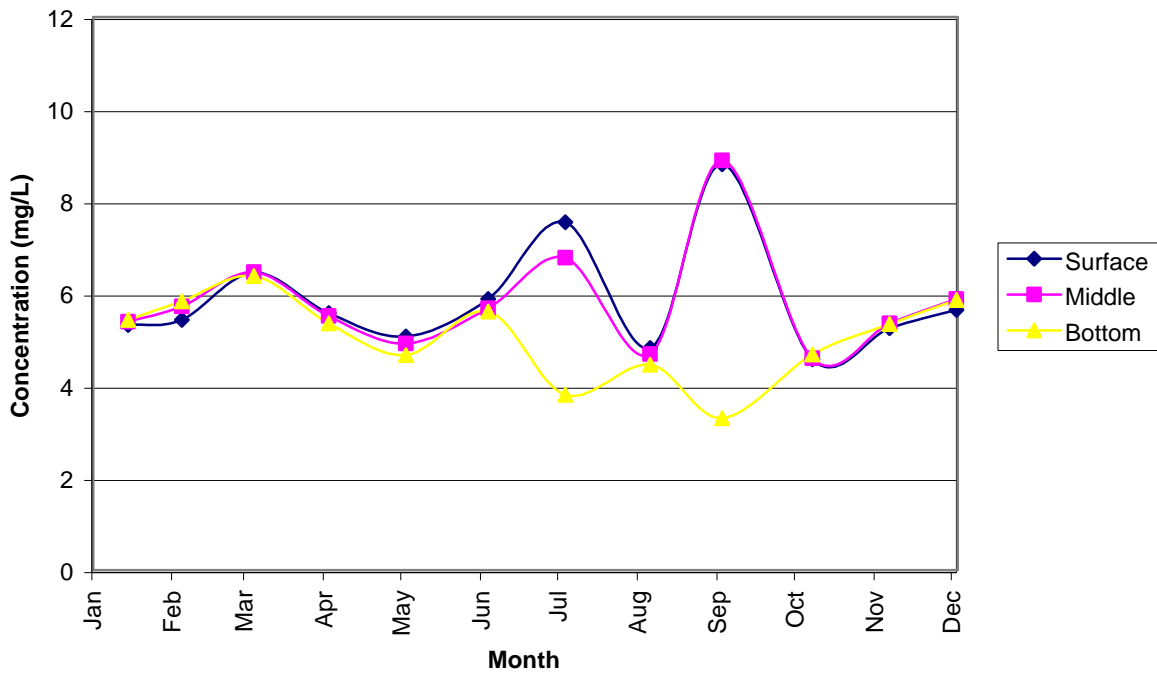
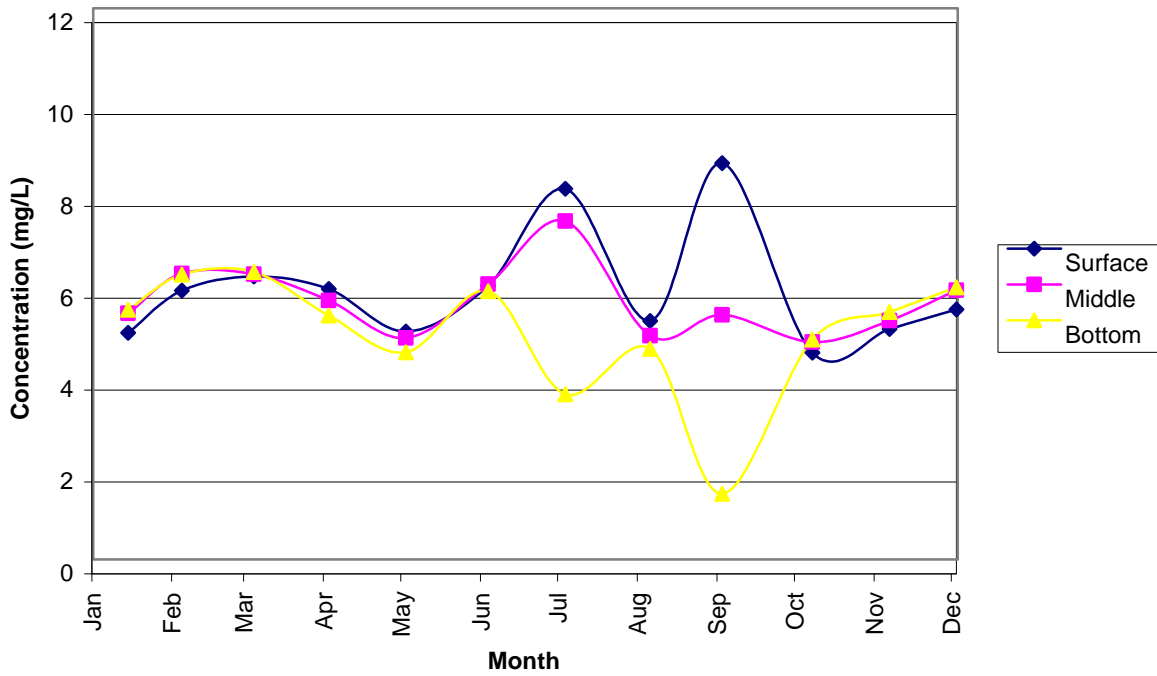


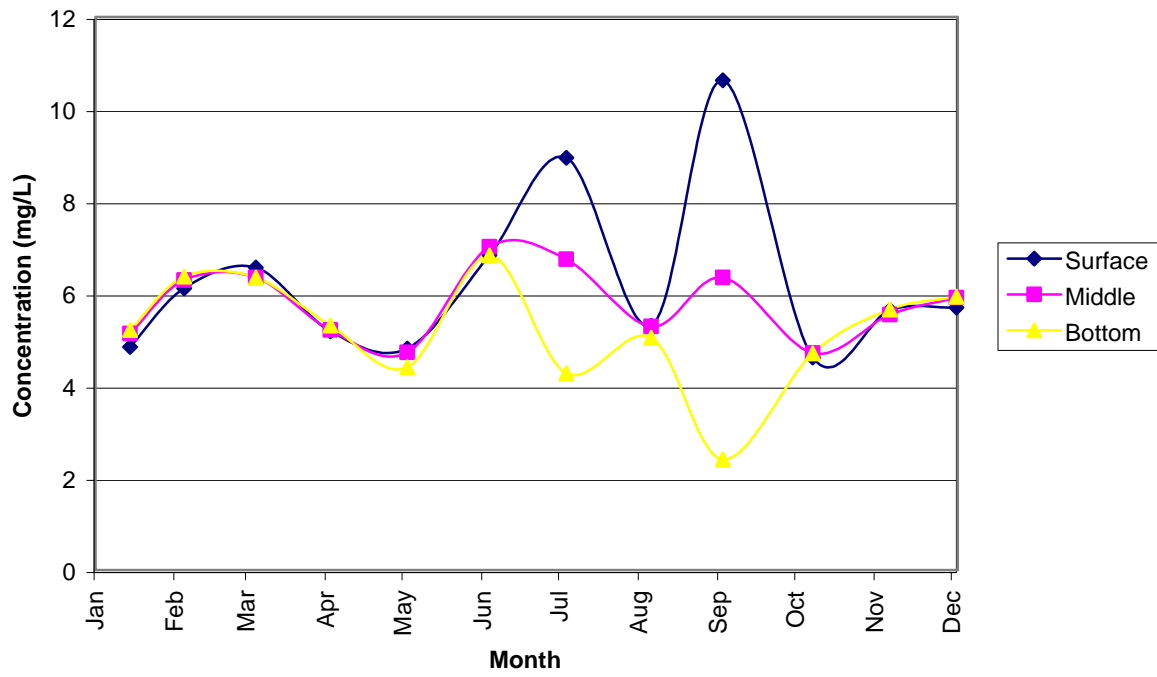
DO Concentrations at VM7 in 2002



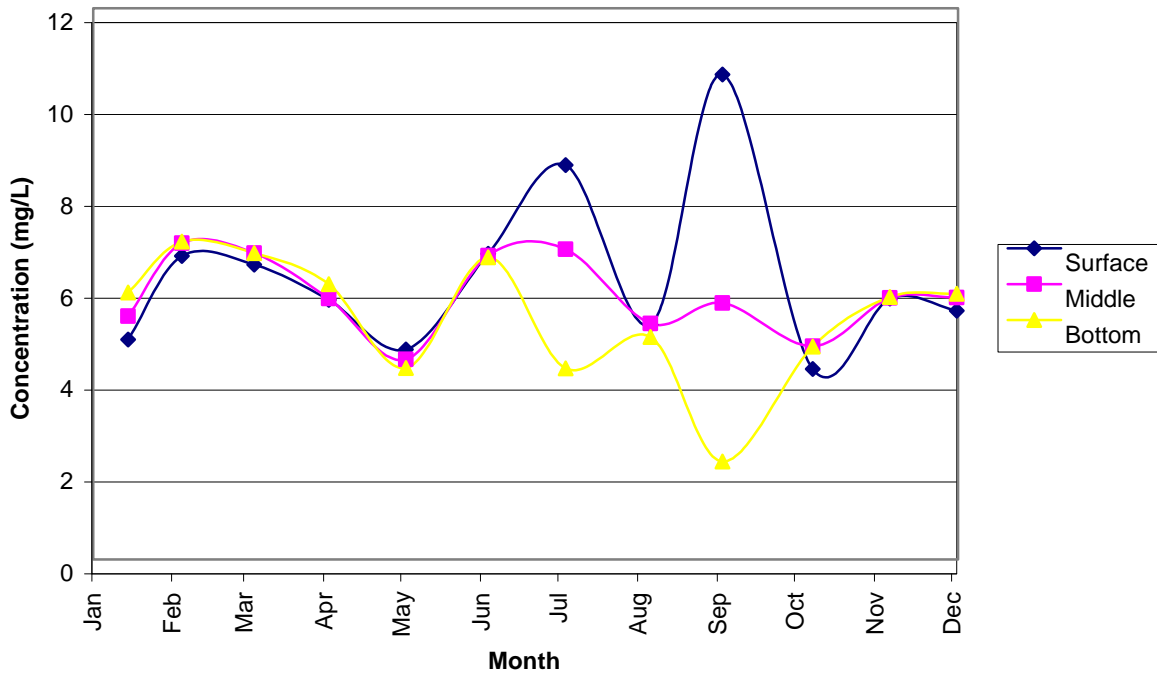
DO Concentrations at VM6 in 2002



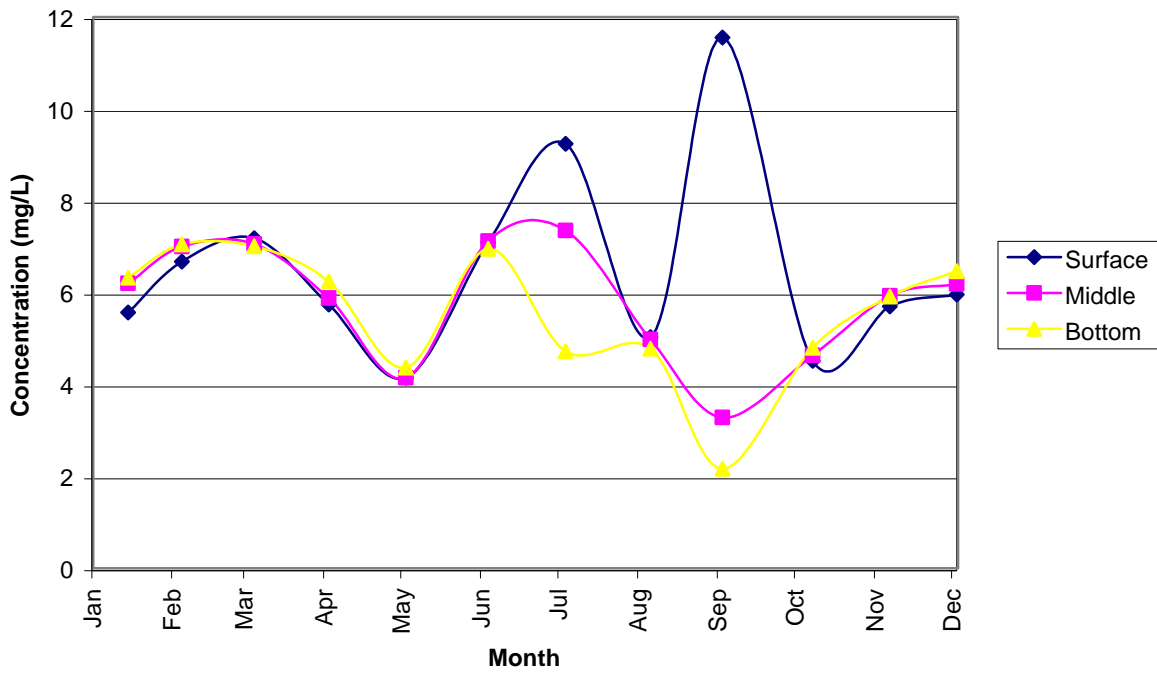
DO Concentrations at VM5 in 2002



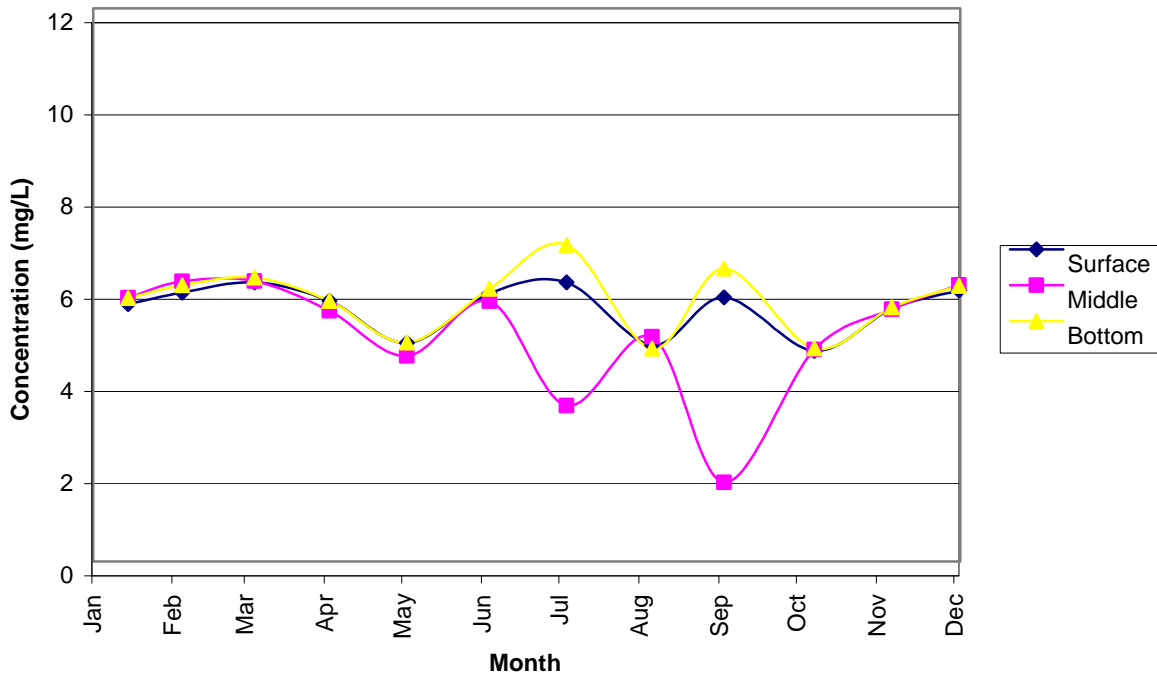
DO Concentrations at VM4 in 2002



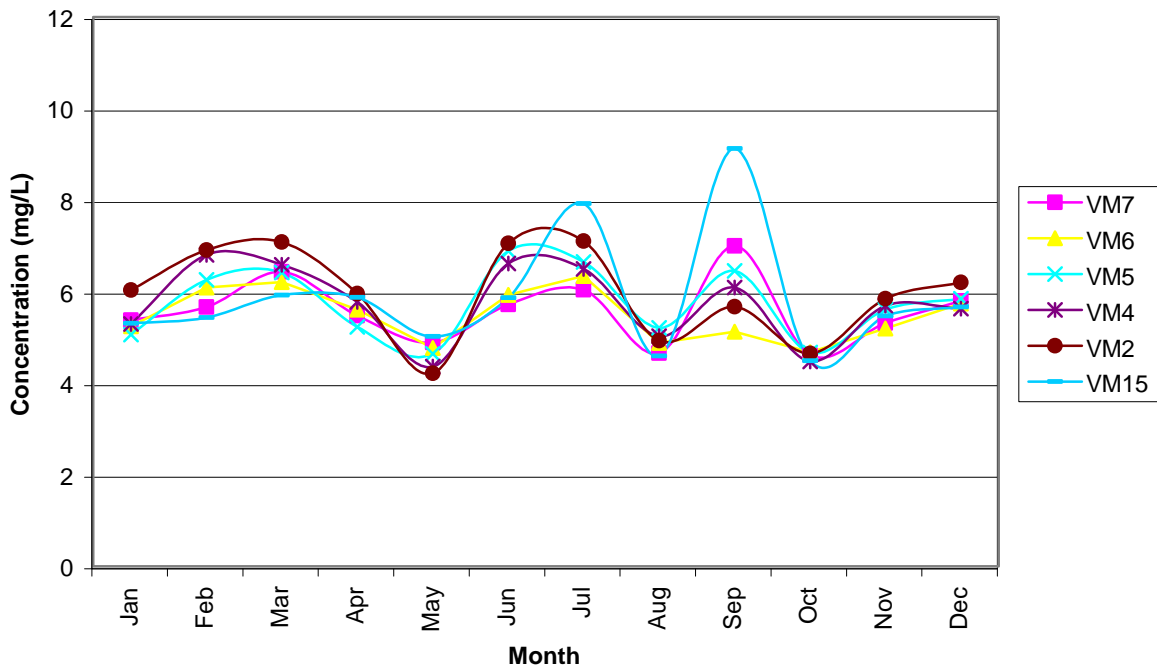
DO Concentrations at VM2 in 2002



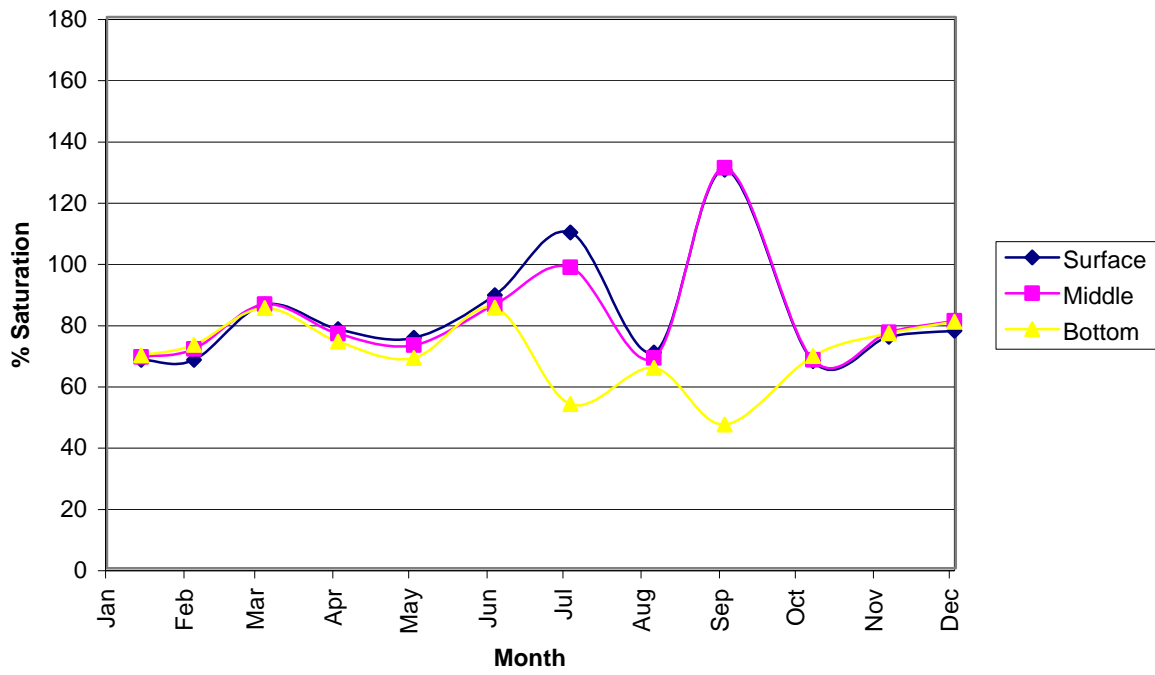
DO Concentrations at VM15 in 2002



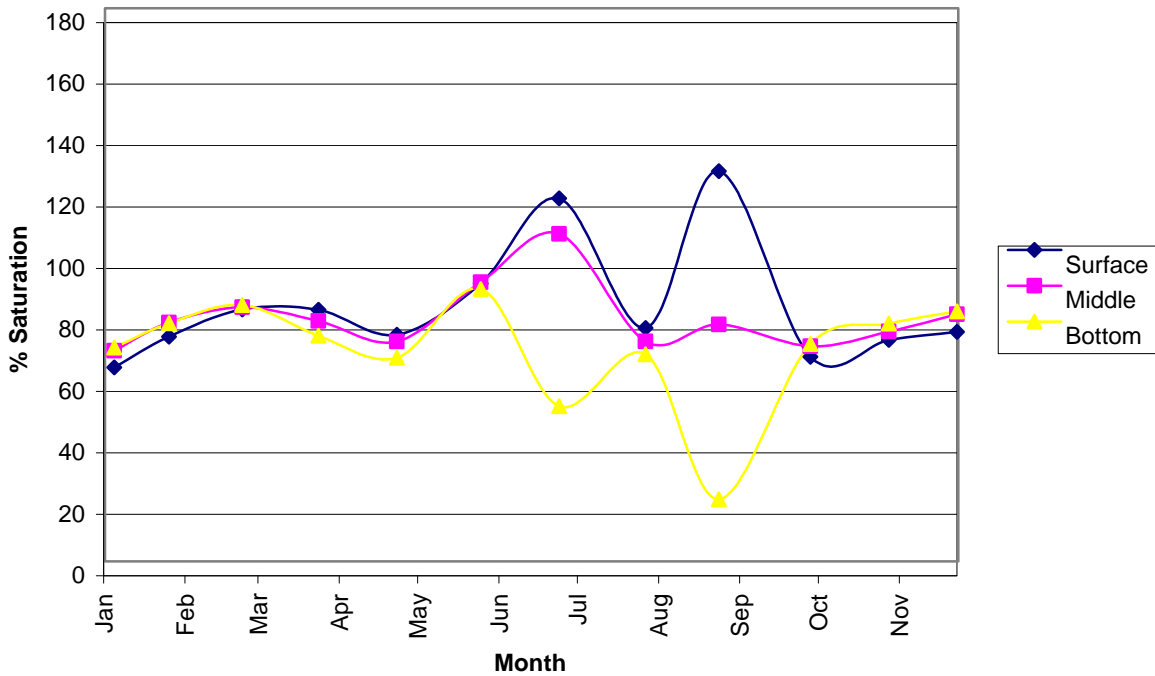
Depth Averaged DO Concentrations at Monitoring Stations in 2002



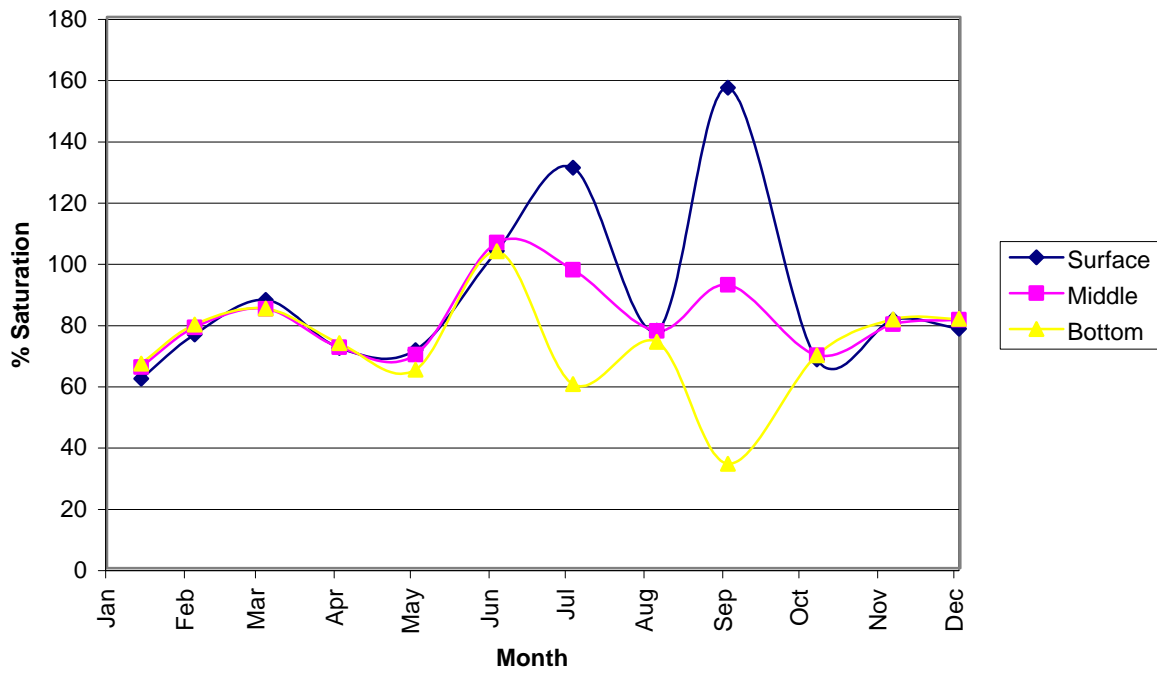
DO % Saturation at VM7 in 2002



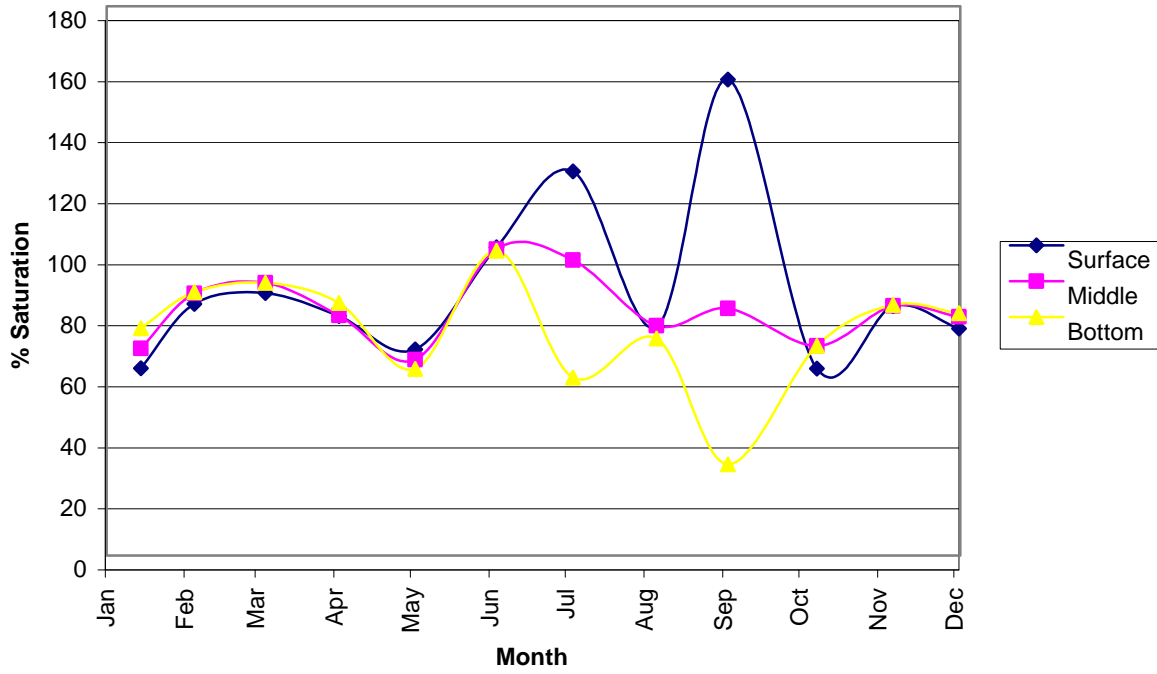
DO % Saturation at VM6 in 2002



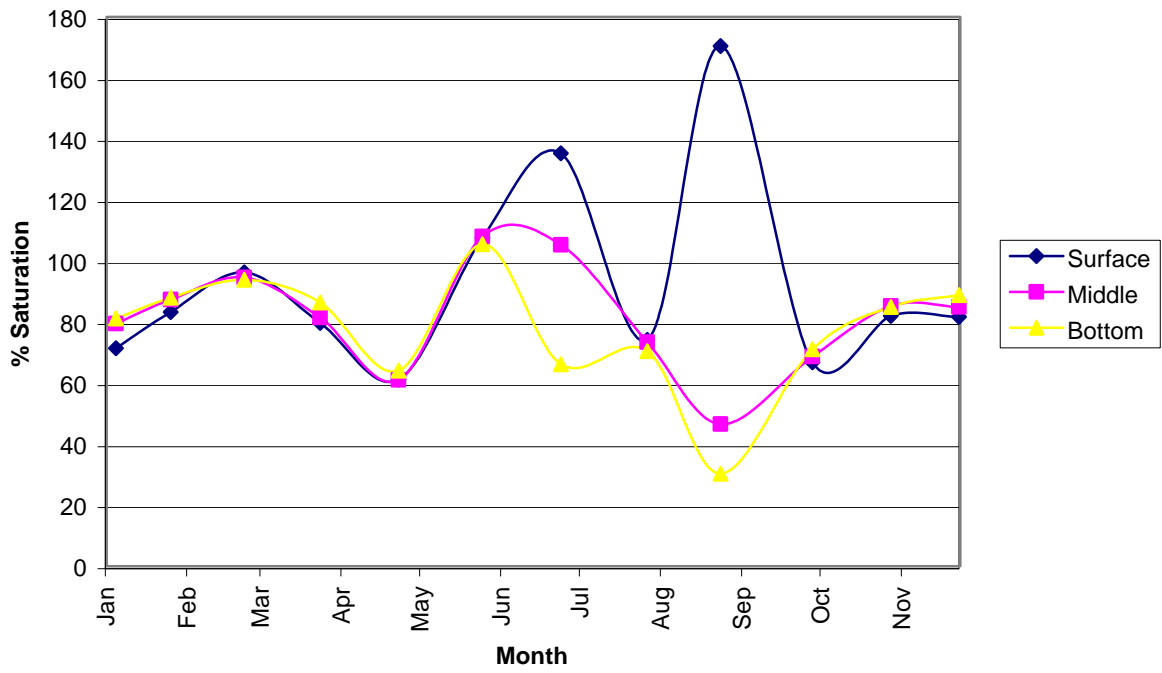
DO % Saturation at VM5 in 2002



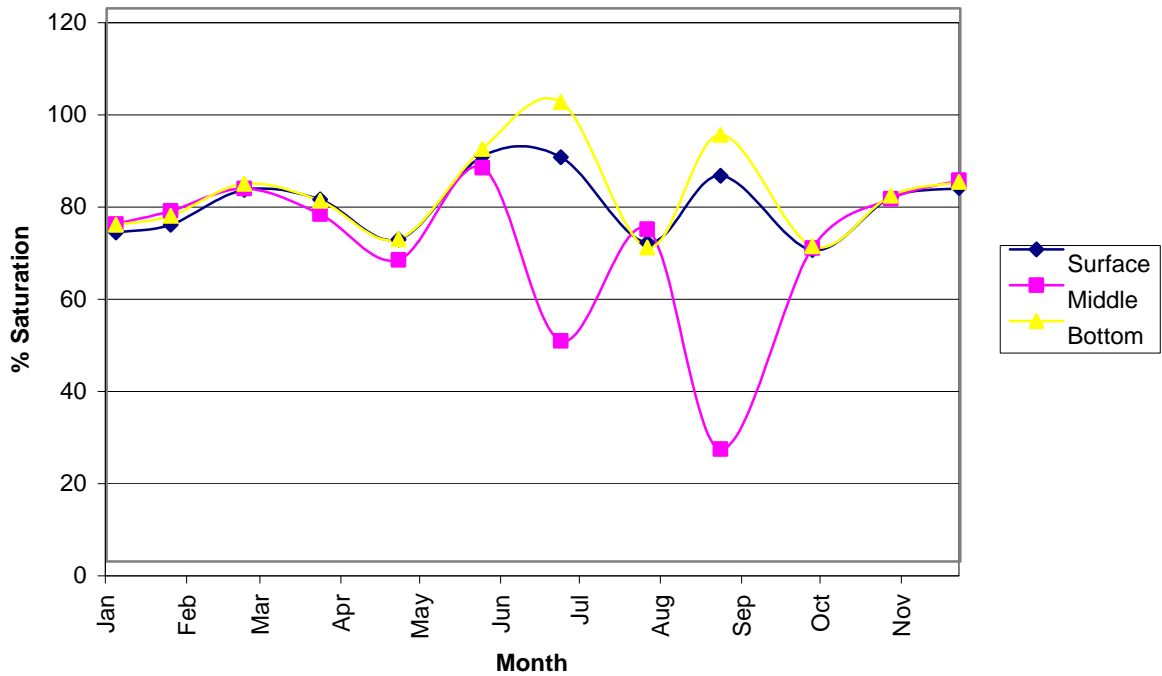
DO % Saturation at VM4 in 2002



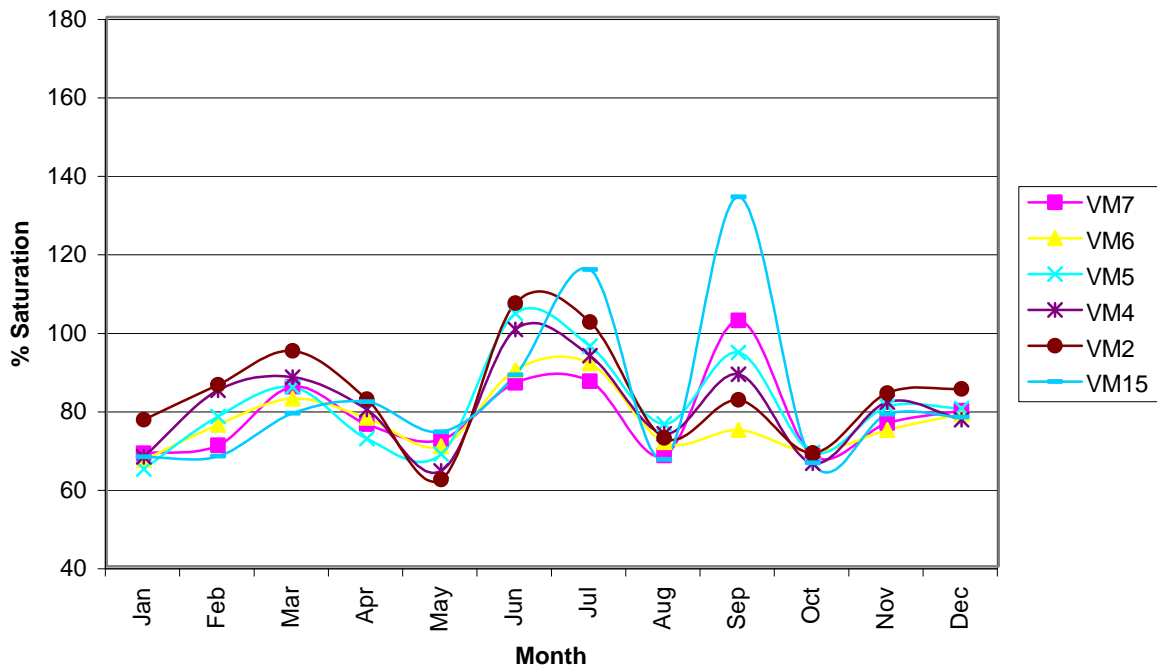
DO % Saturation at VM2 in 2002



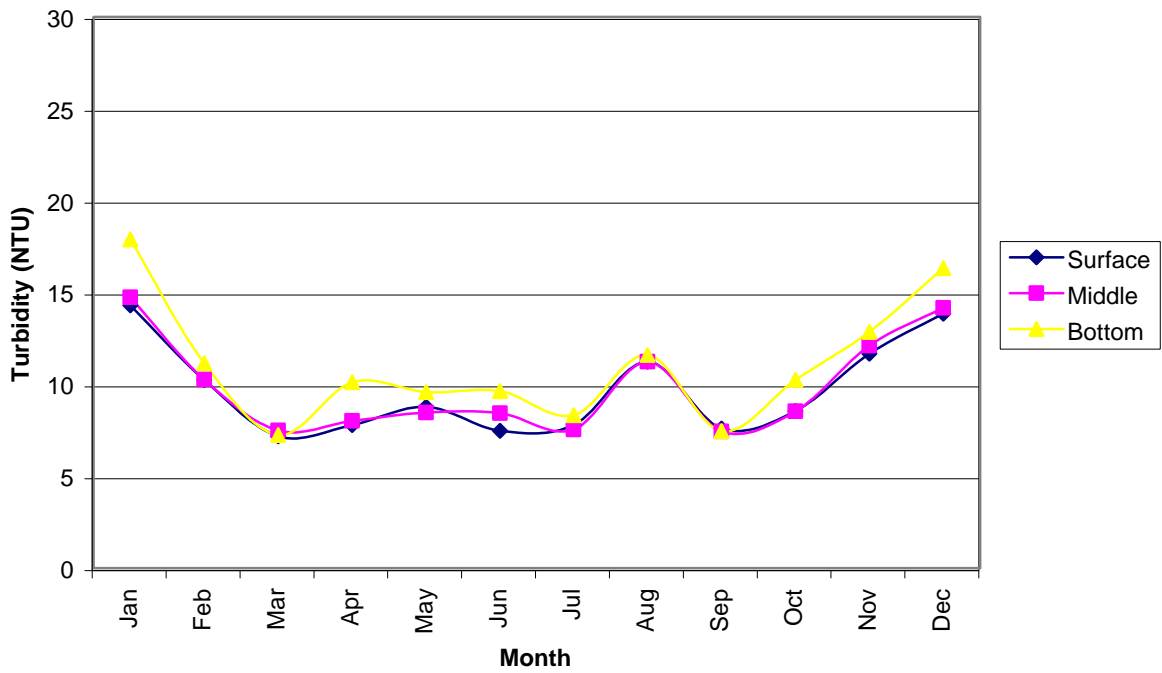
DO % Saturation at VM15 in 2002



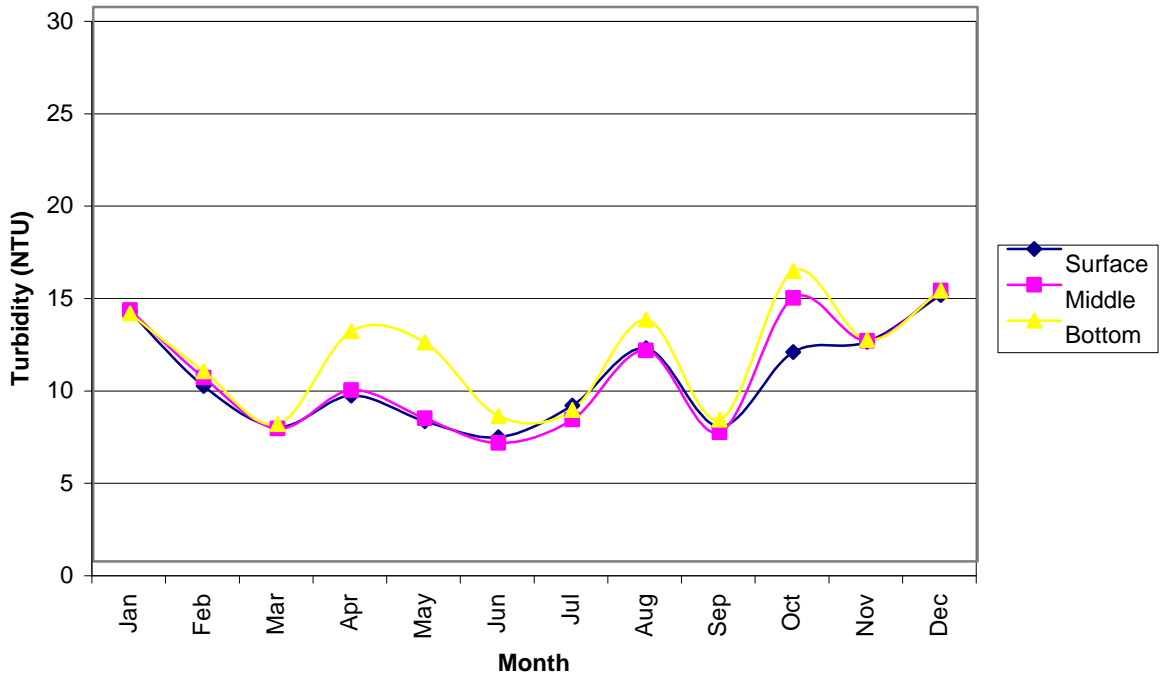
Depth Averaged DO % Saturation at Monitoring Stations in 2002



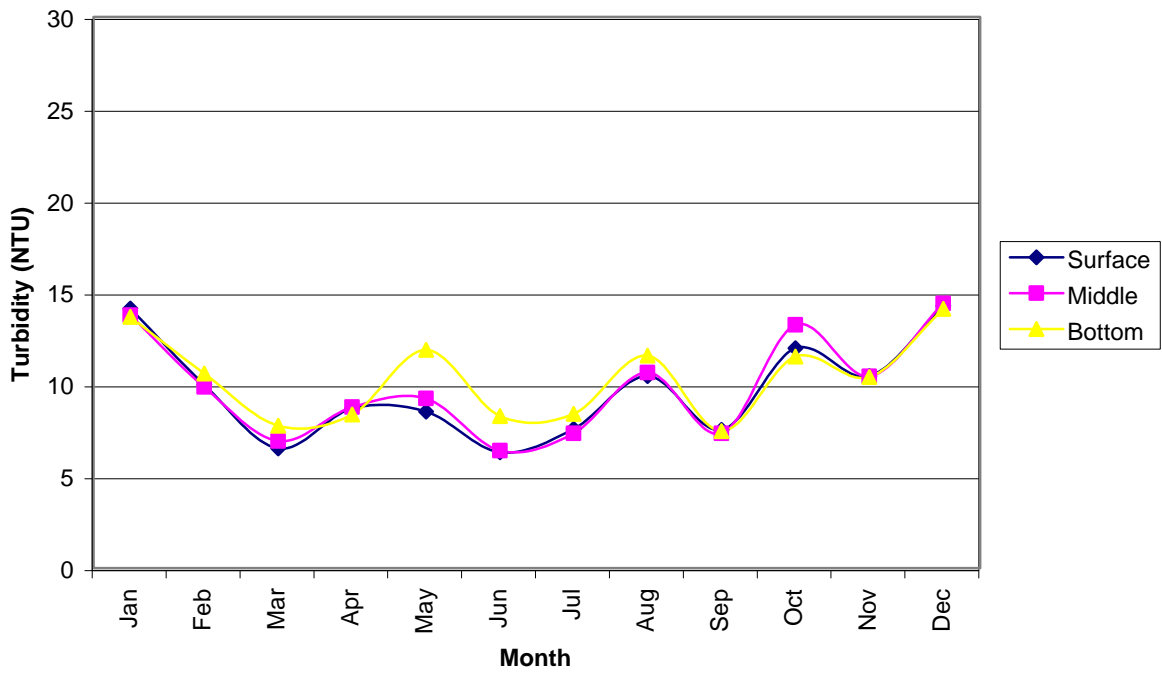
Turbidity Levels at VM7 in 2002



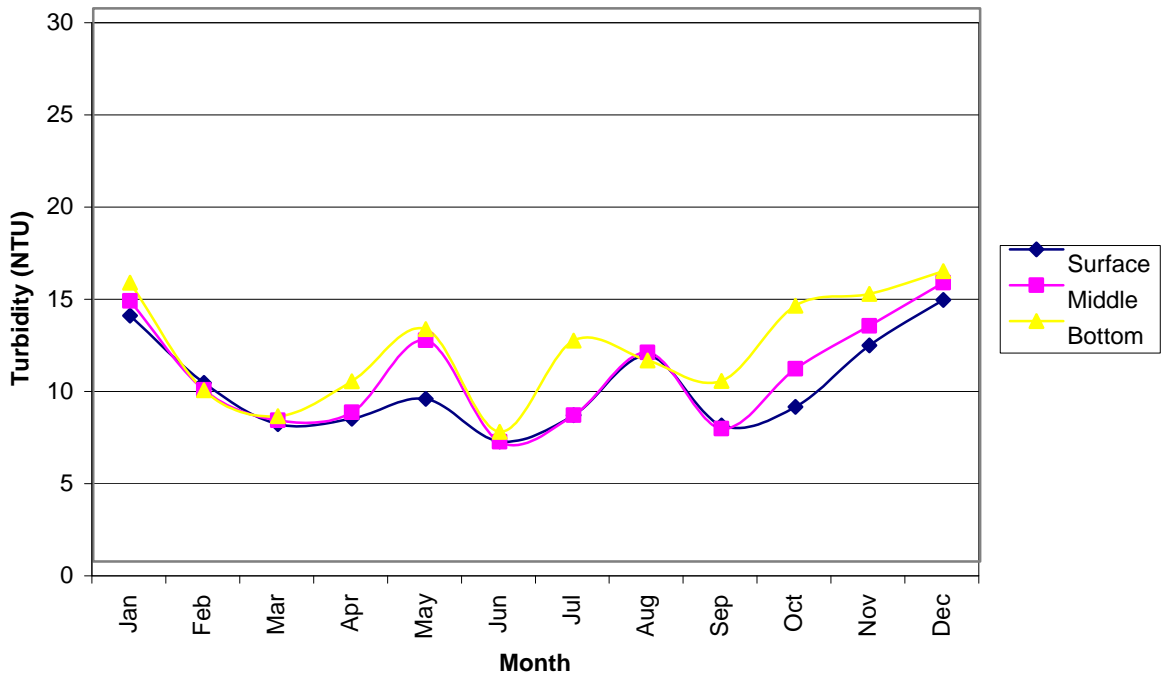
Turbidity Levels at VM6 in 2002



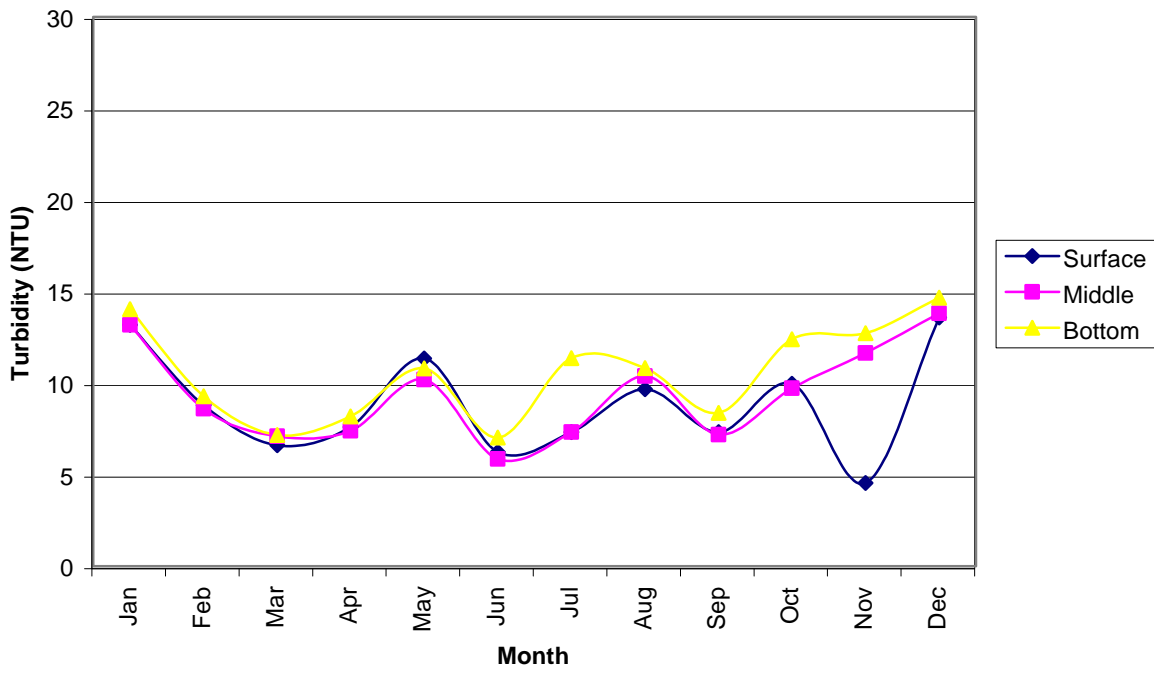
Turbidity Levels at VM5 in 2002



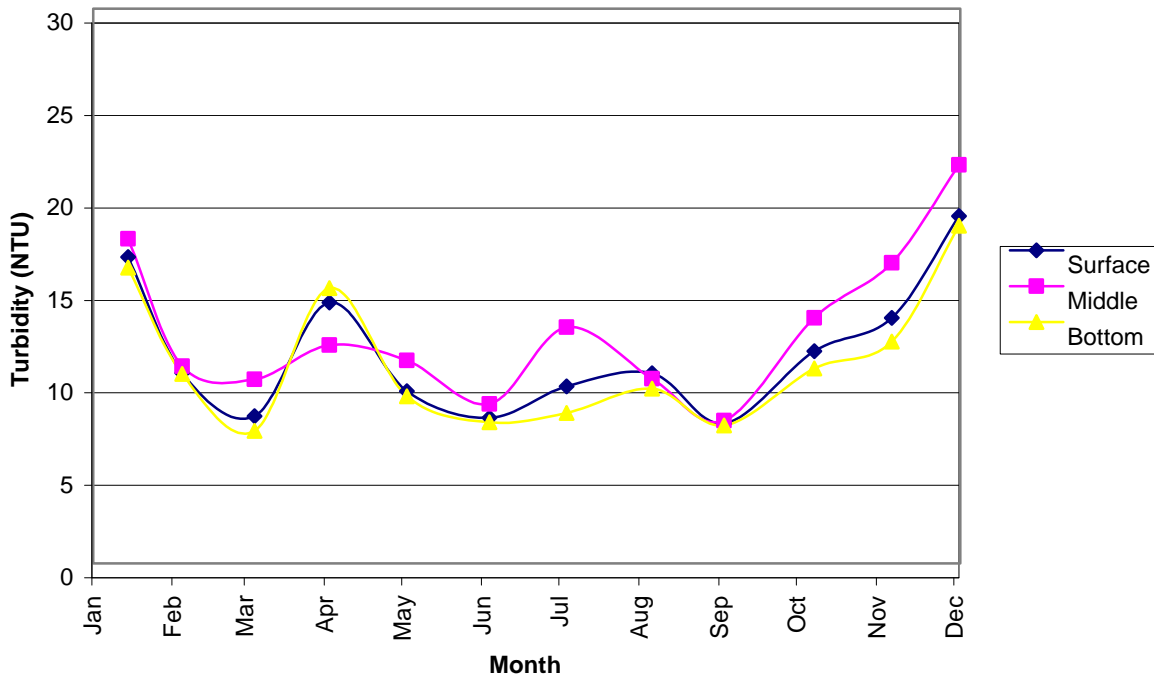
Turbidity Levels at VM4 in 2002



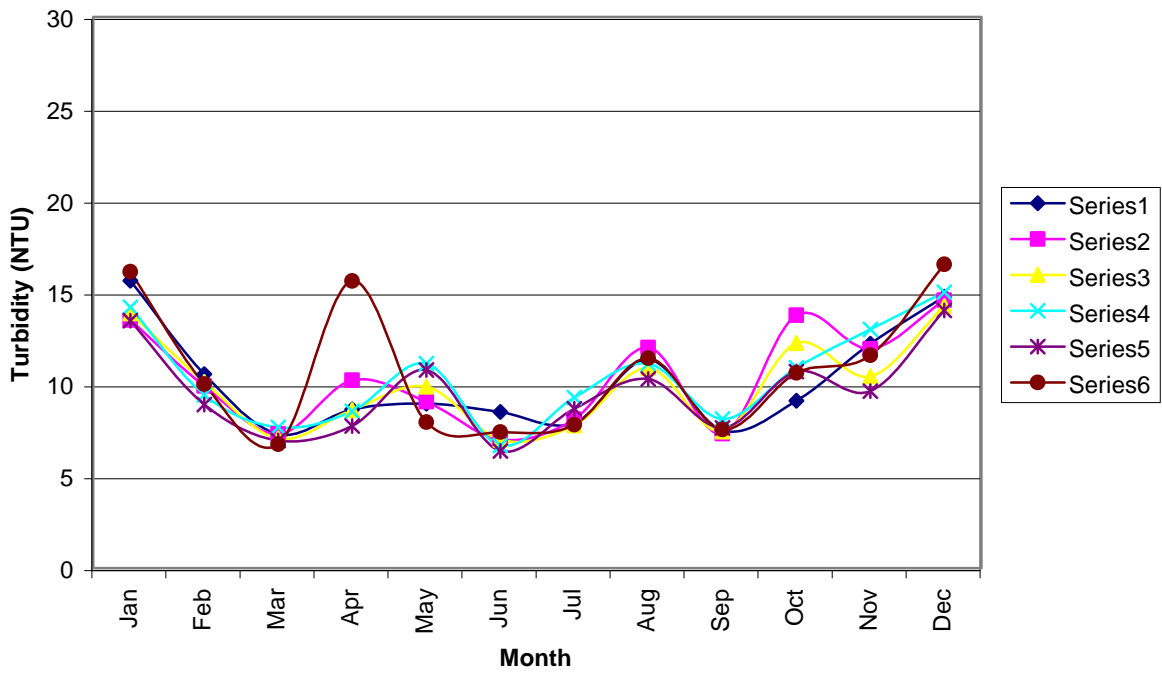
Turbidity Levels at VM2 in 2002



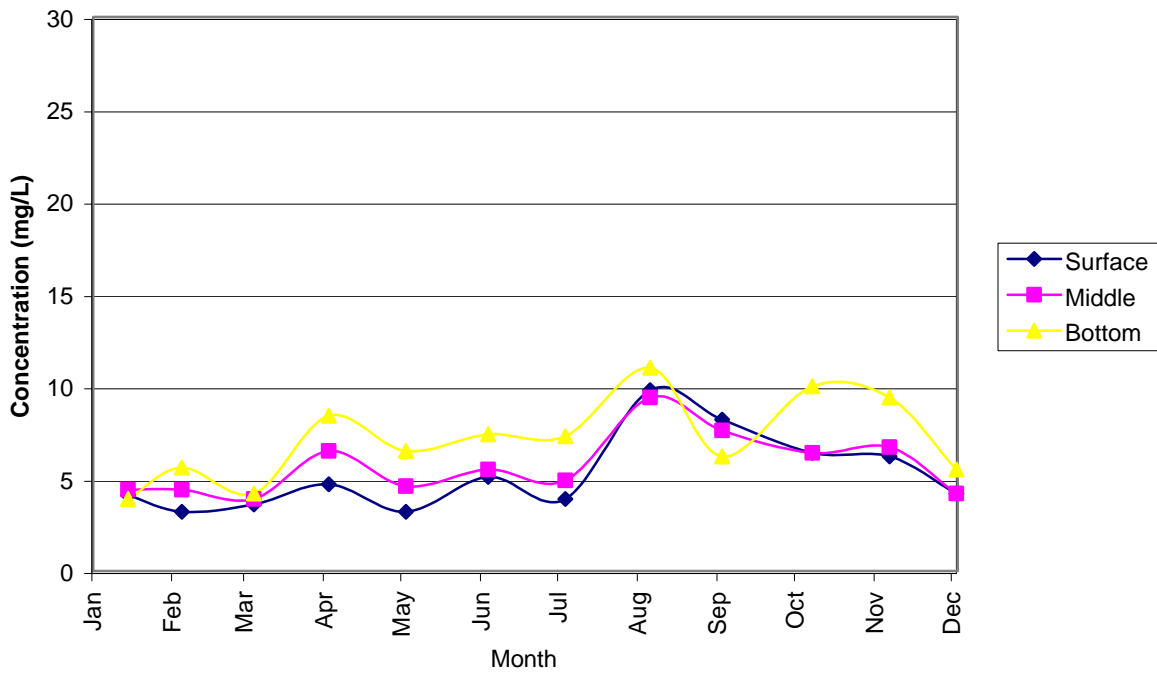
Turbidity Levels at VM15 in 2002



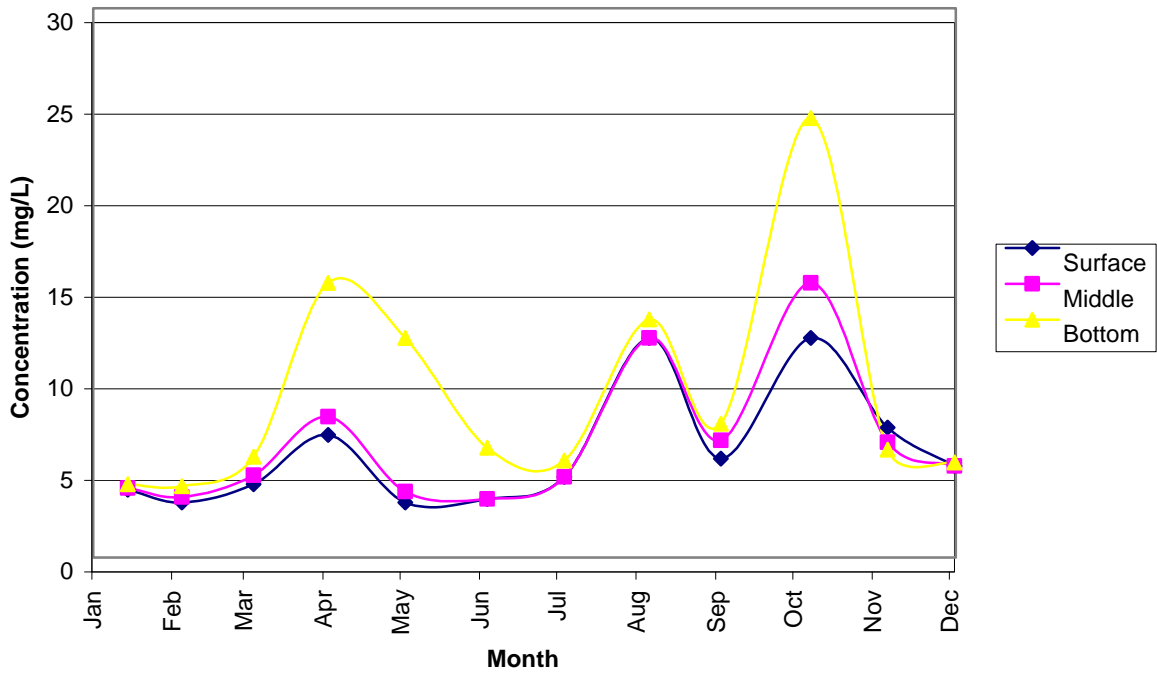
Depth Averaged Turbidity Levels at Monitoring Stations in 2002



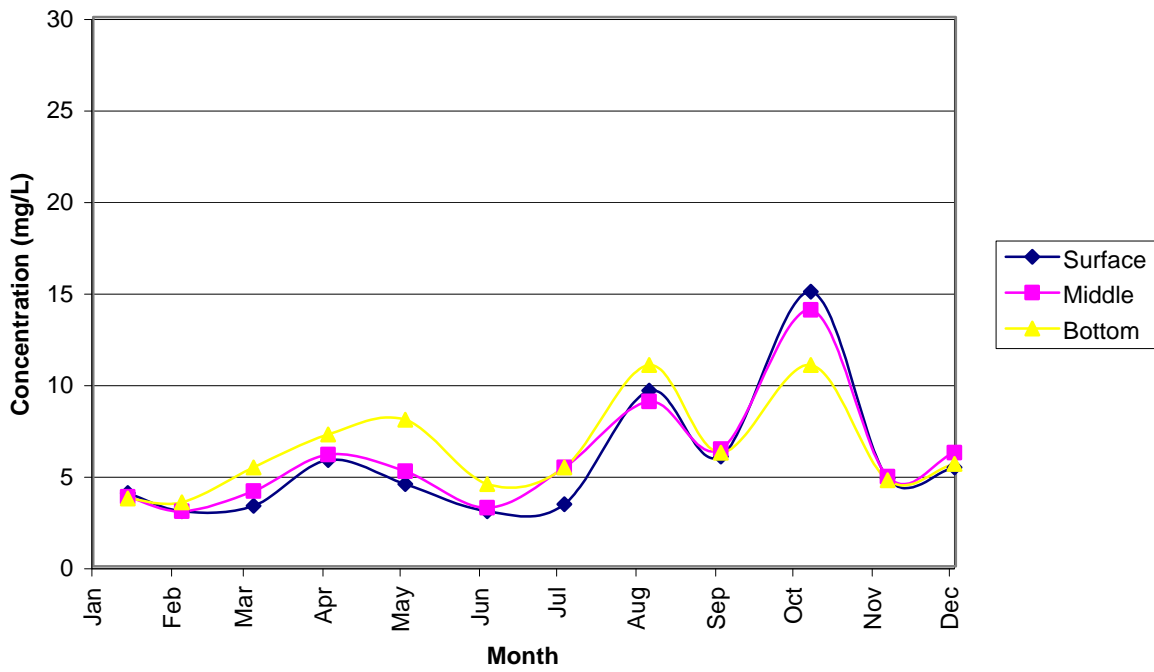
Suspended Solids Concentrations at VM7 in 2002



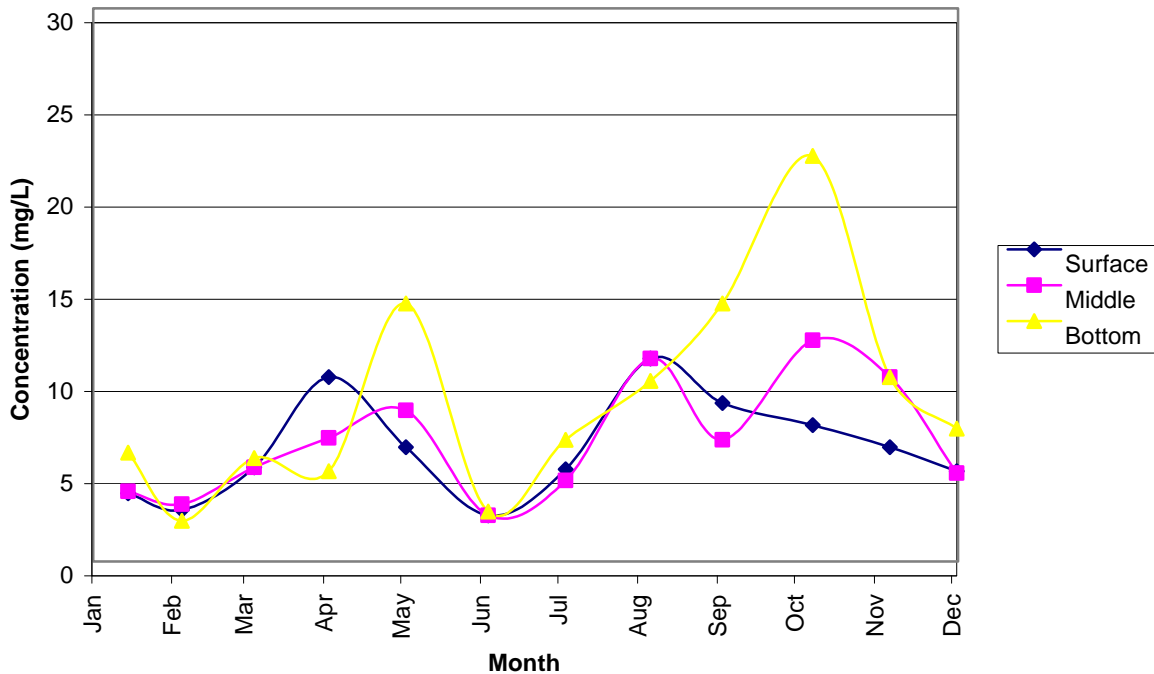
Suspended Solids Concentrations at VM6 in 2002



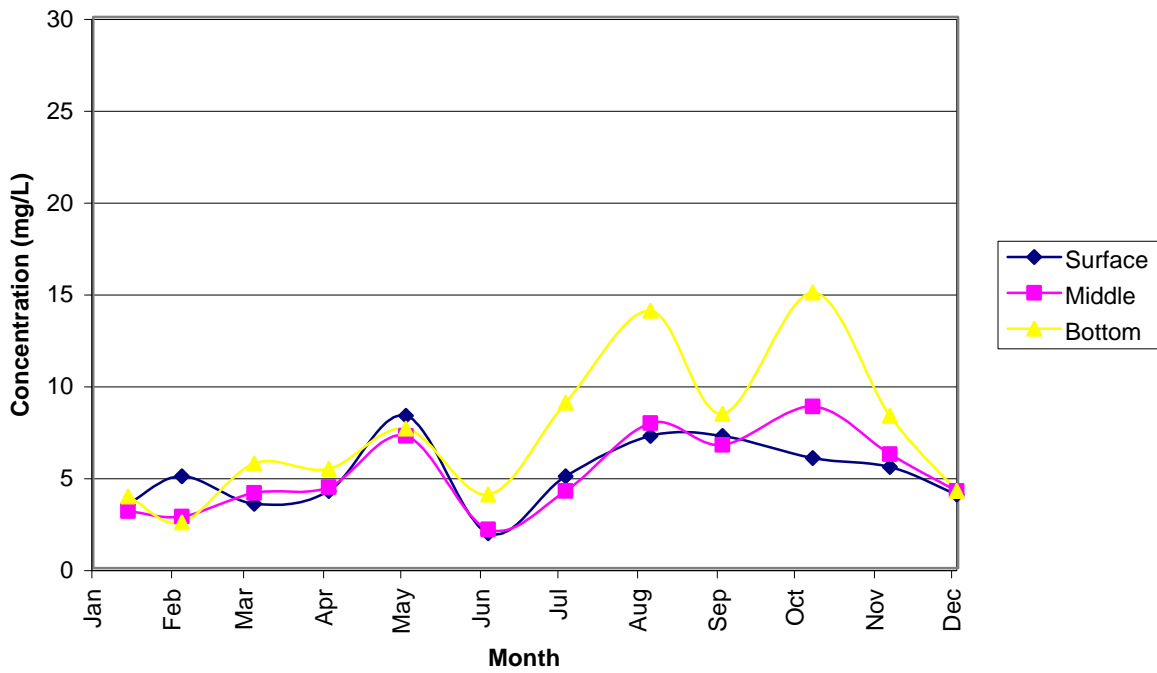
Suspended Solids Concentrations at VM5 in 2002



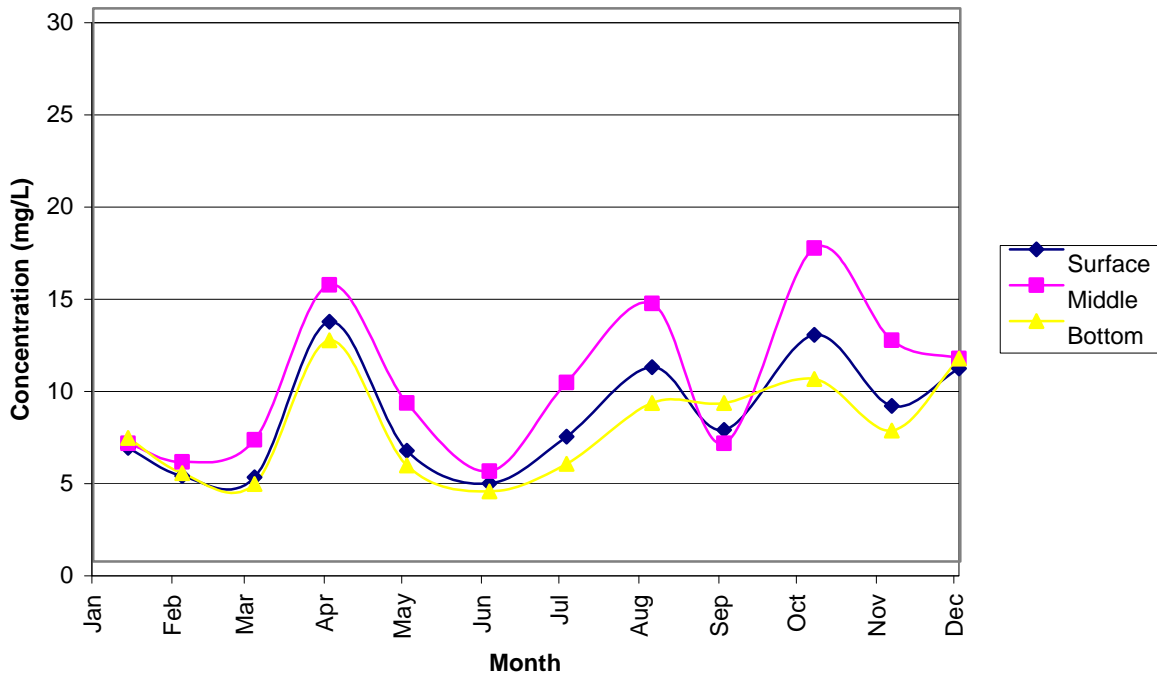
Suspended Solids Concentrations at VM4 in 2002



Suspended Solids Concentrations at VM2 in 2002



Suspended Solids Concentrations at VM15 in 2002



Depth Averaged SS Concentrations at Monitoring Stations in 2002

